

Meeting Notice:

When: Feb 19, 5:00 p.m.

Location: 131 Ash Conf Rm

Subject: Building Tables

Project: Handles / Knobs

Knot News

COLLINS WOODWORKERS GUILD NEWSLETTER

This month's subject:

Tool Storage

Tool Storage.

So how do you store your tools? Ridiculously broad question, right? Pocket knife is in the left front pocket,

table saw is in the garage neighbor borrowed the drywall

square and the kid has my sawzall.

The rest is in a pile on / beside the bench in the garage.

Most of us have a

toolbox with the small hand tools. A brown Kennedy chest that we got at work years ago, maybe an old Sears toolbox with the automotive stuff. How we store our woodworking tools, whether hand tools, router bits, sawblades and whatever else depends on how we like to work and what kind of

work we do. What is perfect for one of us wouldn't be very effective for someone else.

There is something compelling about the large floor based tool chests that Christopher Schwarz promotes. They were common when house carpenters worked out of a wagon with hand tools. They can be locked to keep your fellow workmen from borrowing your tools without permission. While they aren't what we think

of as portable

they can be moved from one jobsite to the next.

They can adapt really well to power tools. Routers, Skill saws and cordless drills all fit nicely in the bottom, various bits and blades all

fit the tills. Even the most devoted power tool guy uses screw drivers and chisels even if he never lifts a plane so they could serve a purpose.

I don't work on a jobsite though and I'm not all that worried about

people walking off with my tools. They strike me as something designed for someone with a younger back

than mine. While I do occasionally haul tools to a friends house or to help Boy Scouts build bird houses

this chest is way too heavy to move for an afternoon job.

There are endless variations on the wall mounted or stand based

tool cabinet. Every high school shop has at least one and maybe

several. If you have wall or floor space in your shop it's a great

way to store a lot of tools. They all seem to have an array of tills,

drawers cubby holes and fixtures to hold whatever tools you need.



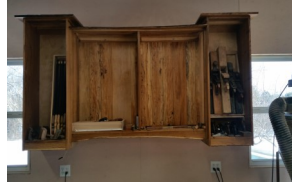
Last month:

Joel's Shop (by Ron Kositzky)

It was a smaller than normal meeting but with a freezing drizzle advisory that's understandable. About 10 members attended. I had to stop about 1/4 mile away to let 3 deer cross the road.

The meeting was informal, the only time all of us were seated was to eat the great chilly. During that time Joel ran a video on using a tool chest for hand tools. Most of the time we all wandered around the shop in groups of 4 or 5 and had discussions on all types of things.

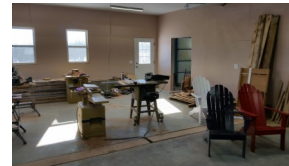
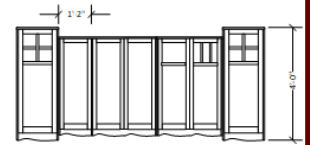
I was in a discussion with several members who I know use hand tools. I asked a question that I have struggled with. How do I set the blade on a hand plane? The answer was "adjust the knob 1/8 turn at a time". My response was that every time I do that I get unexpected results! The same thing as when I followed you tube videos. They then suggested I keep the adjusting knob tight so when I make a cut the blade will be stopped by the adjustment knob. I didn't think that was what was going on because I tried that and everything I could think of. Later in the meeting I had a thought, so I asked if I was suppose



East Wall—saw till, plane till



to release the cam to make adjustments, the answer was no. I realized that was my problem! I had the cam adjusted so tight to hold the blade. I always released the cam, made the adjustment then reengaged the cam! I came home and lightened the tension on the locking cam and made adjustments. WALLA it worked! I guess my experience with adjusting valves on a car engine (loosen the jam nut, make the adjustment then tighten the jam nut) does not apply to hand planes. So this was a very good meeting for me.



This month (February) project:

Jigs

We will share our box joints and fixtures that help us build them!

- General topic is building tables
- Paul Heyd to talk about his various techniques on building tables

- Paul needs to go first as he needs to leave at 5:45
- Other discussion on wood to use, jointing and gluing boards, breadboard ends,

Next Month (December) Meeting

Toy Build Distribution

Project / Subject = Toy Build Distribution, come help carry all the wood toys to the groups that share

these wonderful toys with youth in our community. No Meeting!

Upcoming projects:

February: Handles/Knobs

March: Inlays

We would really LOVE to come see your shop. Would you be willing to open your [garage] door some time?

April: Patio Project. Visit Paul Gibbs' shop

Tool Storage—cont.

For some reason tradition dictates that the doors are built as open sided boxes that hold more tools. While this gives easy access to these tools it guaranties that the



doors will sag. It really doesn't matter if you use heavy

duty piano hinges, you are fighting entropy and it will win every time.

Traditional tool Totes are great for organizing a few tools. You can build it to suit whatever tools you want. They are great on a job site but won't prevent anyone from borrowing your tools. You can load whatever you need for the project at hand or build permanent fixtures to accommodate a specific set. These fixtures should be designed to protect sharp edges.

Because they have no top they accumulate whatever falls in: screws, sawdust, rain.

Joel's Chili Recipe

- 4 lbs. Very lean hamburger
- 4C Chopped red onions
- 3 C Chopped green pepper
- 15 lbs. Fresh tomatoes (or 6-7 quarts canned)
- 2-3 Jalapeno peppers without seeds / webbing
- 4-6 Garlic cloves
- 4T Chili powder
- 1T Basil
- 1T Salt
- 1t Pepper
- 3 Bay leaves
- 32oz Black beans (optional)
- 12 oz. Tomato paste

Brown meat with onions and peppers in a large Dutch oven. Peel and core tomatoes. Move meat and vegetables to a large stainless steel or cast iron pot. Add garlic, tomatoes , and seasonings and simmer for about



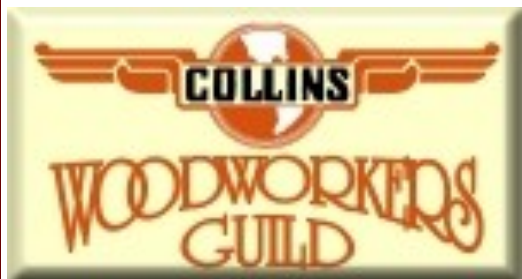
an hour. Add beans and tomato paste and simmer another 30 minutes. Adjust seasonings to taste.

Notes: Tomato's are acidic enough to get a metallic taste from aluminum cookware when it simmers this long. I use a large stainless steel pot.

If you like spicy chili leave the seeds in the jalapenos, add pepper flakes

or use Chipotle chili powder. Use your own judgement. Garlic is like pixy dust; it improves almost anything. People around you might not agree. Make this a day or two ahead. It improves with age. This freezes really well. We make a couple of batches when we have fresh tomatoes, peppers, and onions and freeze most of it for a quick meal in the winter.





The Collins Woodworkers Guild [CWG] is a club dedicated to preserving the age old practice of creation using the medium of wood. CWG members gather monthly to share tips, ideas and experience to further the knowledge of all members. From creating heirlooms for their families to the Guild Toy Build, members help each other get the most out of their woodworking experience.

Membership in the Collins Woodworkers Guild is open to ALL Rockwell Collins, Inc. Employees, Spouses, Retirees, and Contract Employees, AT ALL ROCKWELL COLLINS LOCATIONS!! Everyone is welcome at our meetings and yearly dues, renewed each September, are \$15.00

GUILD BENEFITS

- Access to our EXTENSIVE library of books, magazines and Tool Collection
- Open exchange of ideas, from project help to house building; and a hand when needed
- Social Activities
- Workshops
- Toy Build and other Programs to help our Community
- Educational and Informative Presentations
- Open Houses
- Tours

KNOT NEWS

Is published monthly by the Collins Woodworkers Guild

Officers and Executive Committee

President:

Joel Gillett RC.CWG.President@gmail.com

Vice—President:

Bryan Wesner bnwhole19@gmail.com

Secretary / Treasurer:

Jerry Roland RC.CWG.treasurer@gmail.com

Paul Heyd

Membership:

Jerry Roland RC.CWG.Membership@gmail.com

Library:

Ron Kositzky RC.CWG.Librarian@gmail.com

Website:

Jerry Roland RC.CWG.Webmaster@gmail.com

Newsletter:

Paul Gibbs RC.CWG.Newsletter@gmail.com

Ray Collins ray-mary225@msn.com

Planning Committee (in addition to the above):

Wayne Hanson wayne.hanson@rockwellcollins.com

Perry Coffman woodyptx@yahoo.com

Paul Heyd paul.heyd@rockwellcollins.com

Toys Build Committee:

Joel Gillett Joel.Gillett@rockwellcollins.com

Wayne Hanson wayne.hanson@rockwellcollins.com

Ray Collins ray-mary225@msn.com

Ron Kositzky rek3711@msn.com